

## **Horsham District Local Plan 2023 – 2040**

### **Regulation 19 – Policies Map**

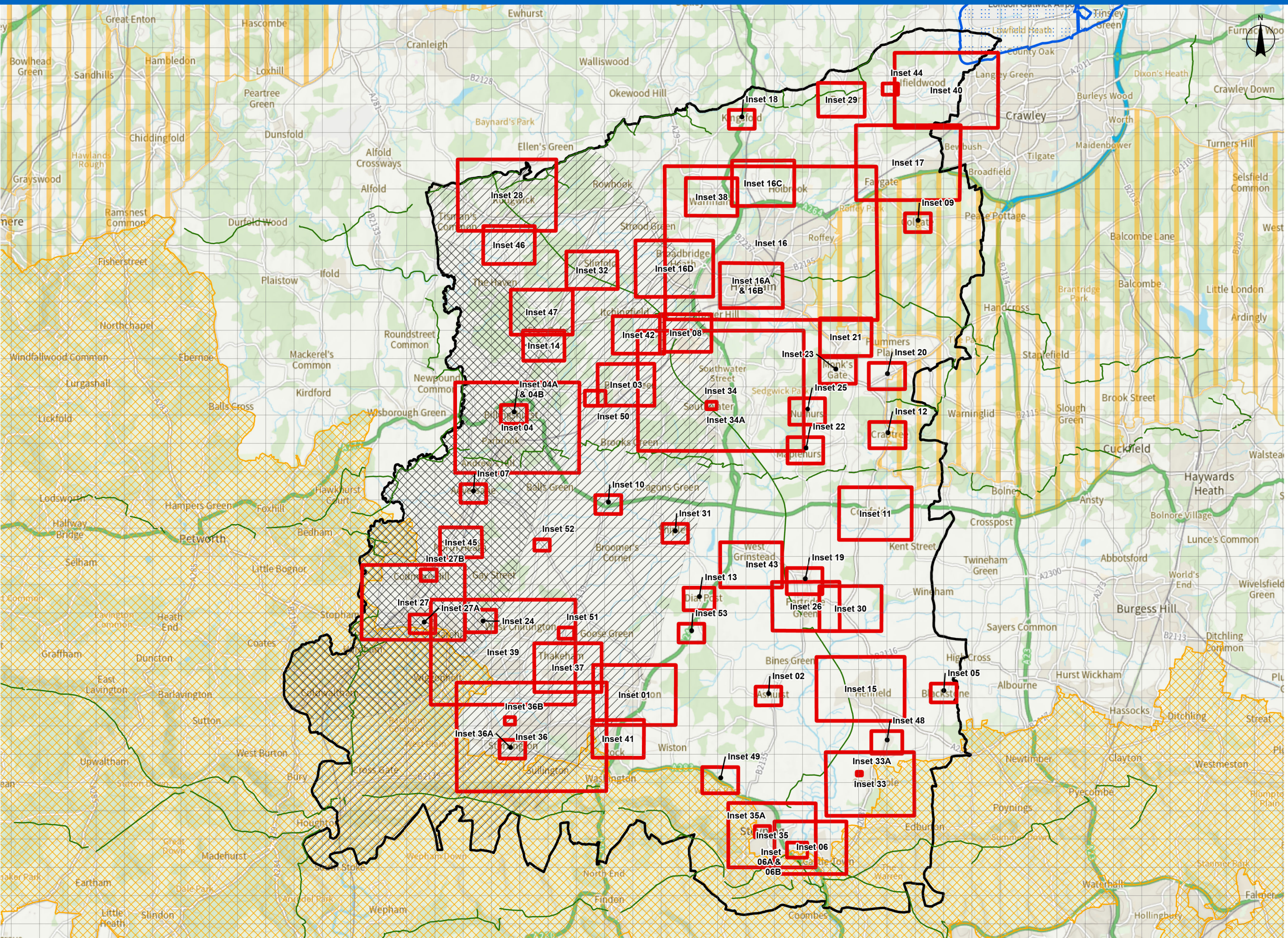
In line with national legislation, the Regulation 19 Policies Map depicts geographically the application of policies contained within the Regulation 19 Horsham District Local Plan 2023 – 2040.

The Regulation 19 Policies Map consists of a District Index Map (Map of the District), Water Neutrality Map and a series of larger scale Inset Maps identifying allocations, designations and constraints that are set out in the Regulation 19 Local Plan. A legend (key) has also been produced to aid in the identification of Local Plan designations and allocations.

In addition to the Regulation 19 policies, the Policies Map also shows features that relate to 'Made' Neighbourhood Plans. Where this is the case, the relevant Inset Map has an additional legend (key) showing the neighbourhood plan designations and allocations, which is located on the right-hand side of the map.

The District Index Map and Water Neutrality Map should be viewed alongside each individual Inset Map to ensure all relevant policies are identified.

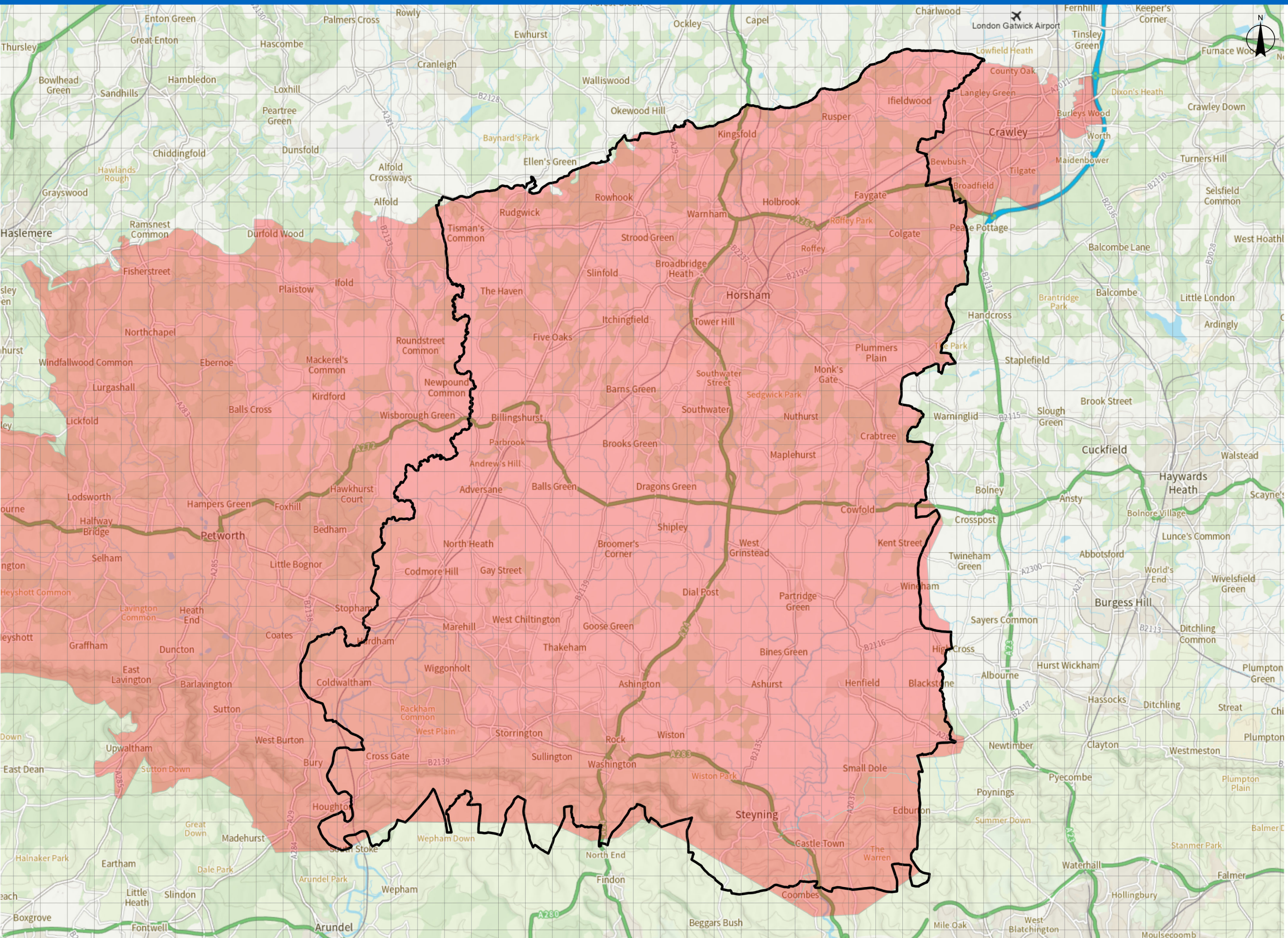




- Long Distance Trails
- Sussex Bat SAC Wider Conservation Area
- Sussex Bat SAC Key Conservation Area
- Gatwick Safeguarding
- Areas of Outstanding Natural Beauty (England) © Natural England
- National Parks (England) © Natural England








Water Neutrality Area





Legend

-  Built Up Area (BUAB) / Secondary Area Boundaries
-  Ancient & Veteran Trees (Ancient Tree Inventory)
-  Horsham District Boundary
-  Gypsy & Traveller Allocation (Strategic Allocation Sites)
-  60dB LAeq, 16hr noise contour, proposed Gatwick southern runway, Summer Day 2040
-  Long Distance Trails
-  Strategic Locations
-  Sites for Housing
-  Gypsy & Traveller Allocation (Strategic Policy 43)
-  Key Employment Areas
-  Sites for Employment
-  Town & Village Centres
-  Broadbridge Heath Opportunity Area (Strategic Policy 5)
-  Primary Frontages
-  Main Shopping Areas
-  Gatwick Safeguarding
-  Conservation Areas
-  Area of Joint Area Action Plan
-  Air Quality Zones

-  Sites of Archaeological Interest
-  WSCC Joint Minerals Local Plan – Policy M11 Strategic Minerals Site Allocation – Ham Farm, Steyning
-  Archaeological Notification Areas
-  Area at Risk of Flooding
-  Traditional Orchards
-  Listed Buildings
-  Locally Listed Buildings
-  Crawley Western Multi-Modal Corridor Safeguarded Area
-  Local Wildlife Sites (Formally SNCIs)
-  Scheduled Monuments
-  Sites of Special Scientific Interest (England) © Natural England
-  Registered Parks & Gardens
-  South Downs National Park
-  Ancient and Semi-Natural Woodland
-  Ancient Replanted Woodland
-  Ancient Wood Pasture
-  Areas of Outstanding Natural Beauty (England) © Natural England
-  Area Outside Defined Settlement Boundaries

Ancient\_Woodland\_England